

Enginuity Auction

Tuesday September 24th 2019 at 6 p.m.



PREVIEW

Saturday September 21st, 10 a.m. - 4 p.m.

Monday September 23rd, 9 a.m. - 6 p.m.

Tuesday September 24th, 9 a.m. - 6 pm.

Enginuity Auction

Tuesday, September 24th 2019



Lot # 401

- 401** Brass microscope by J. Swift & Son London-patent 24960, 13 1/2".
\$40 - \$60



Lot # 402

- 402** 19th century sextant in mahogany case.
\$200 - \$300
- 403** Brass kettle on stand.
\$10 - \$20
- 404** Pair of lanterns, "Bakboard" and "Stuurboard".
\$15 - \$30
- 405** Coloured print after Barrie Clark, "Spitfire".
\$20 - \$30



Lot # 406

- 406** Watercolour signed J. Grier '36, 10 1/2" X 16 3/4" "S.V. Herzogin Cecilie"
\$150 - \$300
- 407** Schatz ship's clock.
\$25 - \$50
- 408** Framed photo signed Carey E. McAllister, "Boat, Victoria BC".
\$15 - \$30



Lot # 409

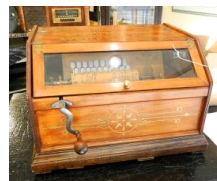
- 409** "Princo" wall barometer.
\$50 - \$100
- 410** Bed warmer.
\$10 - \$20
- 410A** Regulator wall clock.
\$15 - \$30

- 411** Oak cased Aneroid barometer.
\$15 - \$30



Lot # 412

- 412** Watercolour signed W. Knox 1946, 10" x 14", "Ships at Sea".
\$50 - \$75
- 413** Henry Birks & Sons Ltd. inlaid mahogany barometer.
\$20 - \$40



Lot # 414

- 414** Chautauqua Roller Organ, 17"w x 15"d x 13"h.
\$350 - \$450



Lot # 415

- 415** Wileco Dampfmachine model.
\$25 - \$50
- 416** Ship's steering wheel.
\$15 - \$30
- 417** Pair of prints after H. Heine, "Captain Cook".
\$40 - \$60
- 418** Limited print signed H. Heine, 17 1/4" X 25", "Fort Victoria".
\$150 - \$250
- 419** Oil painting signed J. Venables, "Two Masted Schooner".
\$15 - \$30



Lot # 420

- 420** Model of a schooner on stand.
\$50 - \$100



Lot # 420A

- 420A** 1975 TR6 showing 11,590 miles since re-build.
\$15,000 - \$17,500

- 421** Microscope in case. \$25 - \$50



Lot # 422

- 422** Speed boat Model- "Baby Bootlegger", 41". \$50 - \$75

- 423** Asian cork artwork. \$10 - \$15



Lot # 424

- 424** Antique inlaid 8 string lute. \$50 - \$75

- 425** 1890's Music disc. \$15 - \$30

- 426** Model Ship, "HMS Beagle" (Charles Darwin's ship). \$25 - \$50

- 427** Art Deco GE mantle radio. \$20 - \$40



Lot # 428

- 428** H&M Wardrobe trunk with vintage labels. \$50 - \$75

- 429** Suitcase with shipping labels. \$10 - \$20

- 430** Globe of The World. \$15 - \$25

- 431** 1940's Diehl fan. \$20 - \$40

- 432** Brass samovar. \$25 - \$50

- 433** Lobster trap. \$15 - \$25



Lot # 434

- 434** McLagan upright gramophone. \$50 - \$100



Lot # 435

- 435** Colored engraving - "The Phoenix & The Rose". \$20 - \$40

- 436** Trucks tool box. \$25 - \$50

- 437** Wheelchair. \$15 - \$30

- 438** Globe of the world lamp. \$10 - \$20

- 439** Compco Chicago Illinois light box. \$10 - \$20

- 440** Model of a Danish ship, "Eljborn". \$75 - \$150

- 441** Railway lantern. \$15 - \$20

- 442** Lot of Austin car manuals, etc. \$10 - \$20

- 443** Painting of a ship dated 1943. \$20 - \$40

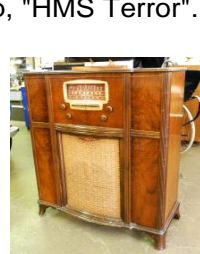
- 444** Model paddle steamer, "Vanguard". \$75 - \$150

- 445** 19th century chocolate mold, maple syrup bucket, cream maker, etc. \$20 - \$40

- 446** Model Ship, "Dapper Tom". \$40 - \$60

- 447** Print after Jeffries - Canadian Pacific Train. \$5 - \$15

- 448** Model tall ship, "HMS Terror". \$75 - \$150



Lot # 449

- 449** Stromberg-Carlson walnut cased console radio. \$25 - \$50

- 450** Ship plaque mounted on a board, Canadian Cadets Corps. \$10 - \$15

- 451** Ship plaque mounted on a board - Admiral Martin Navy League Cadet Corps. \$10 - \$15

- 452** Art Deco fire screen. \$10 - \$15



Lot # 453

- 453** Marmet Coach Built vintage perambulator.
\$50 - \$100



Lot # 454

- 454** Brass samovar.
\$25 - \$50



Lot # 455

- 455** Ship's model- Baltimore Clipper "Harvey" 1847, 34".
\$40 - \$60
- 456** Rotary telephone.
\$10 - \$15
- 457** Cast iron pot with lid.
\$10 - \$15
- 458** Iron two prong fire prod.
\$10 - \$15
- 459** Uniwell cash register.
\$10 - \$15
- 460** Print of battleships after K. Darling '83.
\$15 - \$25
- 460A** Canadian Forest Products print of a Trestle Bridge.
\$10 - \$20
- 461** Racal-Decca radar system from the HMCS Chignecto. .
\$25 - \$50
- 462** Copper bucket likely used for shellfish.
\$15 - \$30
- 463** Framed sketch signed George McLachlan 1986, "Port Moody July 4 1886".
\$25 - \$50
- 464** Framed print - Canadian Pacific rolling stock.
\$10 - \$15
- 465** Coloured drawing signed R.Ellis, 7 3/4" x 13 3/4", "Small Steamship at Anchor".
\$15 - \$30
- 466** Model Ship, "Staten Yacht".
\$75 - \$125

- 467** Lot with leather bag, binoculars, seltzer bottle, etc.
\$20 - \$30
- 468** Large antique cast iron pot with lid.
\$15 - \$25
- 469** 2 epees.
\$15 - \$25
- 470** Travel chest.
\$20 - \$40



Lot # 471

- 471** Model ship, "San Juan Galleon XVI Century".
\$75 - \$125
- 472** Lot of Iron Horse prints.
\$10 - \$20
- 473** Leica microscope in case.
\$20 - \$40
- 474** Depth micrometer and an adjustable micrometer.
\$20 - \$30
- 475** Pair of vintage Elna sewing machines
\$10 - \$20
- 476** Model Ship, "Egyptian Ship".
\$20 - \$40



Lot # 477

- 477** French Sept Paris 35mm movie camera- circa 1920's in leather case.
\$25 - \$50
- 478** Model ship, "Renown".
\$40 - \$60



Lot # 479

- 479** Seven enameled car badges- circa 1960's.
\$25 - \$50
- 480** Gendrom perambulator.
\$20 - \$40
- 481** Victorian gramophone with records.
\$25 - \$35
- 482** English pram, 1950's, leather lined, includes cover, and anti-tip brakes.
\$25 - \$50

483 Automotive Diagnostic tool.

\$25 - \$50



Lot # 484

484 Mitsubishi satellite phone and antenna.

\$25 - \$50