

Ethno World Auction

Tuesday August 25th 2020 at 6 p.m.



PREVIEW

Saturday August 22nd, 10 a.m. - 4 p.m.

Monday August 24th, 9 a.m. - 6 p.m.

Tuesday August 25th, 9 a.m. - 4 p.m.

Ethno World Auction

Tuesday, August 25th 2020



Lot # 401

- 401** Japanese carved ivory figure, 7".

\$400 - \$600

- 402** Decorative reproduction pistol with MOP decoration.

\$75 - \$100



Lot # 403

- 403** Rare Chinese purple jade monkey on horse with base, 6 1/4" x 8" x 3".

\$300 - \$500



Lot # 404

- 404** Carved argillite Wasco - Sea Wolf, 8".

\$600 - \$800



Lot # 405

- 405** Argillite pole signed Tim Boyco, 8 3/4".

\$300 - \$500



Lot # 406

- 406** Argillite pole signed Christian White, 5 1/2".

\$200 - \$400



Lot # 407

- 407** Chinese jadeite bird and lily pads with burl wood base, 12".

\$200 - \$400



Lot # 408

- 408** 19th century copper brush pot, Hsuan-Te Reign Mark.

\$125 - \$150



Lot # 409

- 409** 19th century Japanese cloisonne shaped plate, 12".

\$150 - \$200



Lot # 410

- 410** 18th century gilt lacquered bronze figure of Sakyamuni.

\$150 - \$200



Lot # 411

- 411** Asian silver overlaid seated goddess, 8 1/2".

\$250 - \$300



Lot # 412

- 412** 19th century white glazed water pot, "Flower Blossom".

\$100 - \$150



Lot # 413

- 413** Late 19th century copper red wine ewer, "Duck Pond".

\$150 - \$200



Lot # 414

- 414** Pair of Japanese cloisonné on porcelain vases.

\$100 - \$150



Lot # 415

- 415** Argillite raven pendant signed RB with abalone eye, 2 1/4".

\$75 - \$125



Lot # 416

- 416** Carved argillite signed CW (Christia White), "Raven Searching", 7 1/2".

\$400 - \$600



Lot # 417

- 417** Print 25/105 signed A.Vickers, 20" diameter, "Solitude".

\$150 - \$250



Lot # 418

- 418** Chinese charger with hanger, 18 1/2" diameter.

\$75 - \$125

- 419** 4 Chinese dragon embroideries in a frame.

\$50 - \$75



Lot # 420

- 420** Papua New Guinea suspension hook carving, 55".

\$700 - \$900



Lot # 421

- 421** Chinese ink on silk, 27" x 16", "Calligraphy & Flowers".

\$150 - \$300

- 422** Native eagle mask with feathers signed Paul Hahn '78.

\$250 - \$300

- 423** African mask of a woman.

\$50 - \$75



Lot # 424

- 424** Cedar eagle and whale plaque signed Cicero August, 18 1/2" x 12".
\$250 - \$500



Lot # 425

- 425** Northwest coast carved totem signed G. Morrison Apr 79, 50".
\$250 - \$500



Lot # 426

- 426** Pair of watercolours signed S.Hodo, 10" x 4 1/2", "Japanese Women".
\$75 - \$125



Lot # 427

- 427** Cedar plaque signed Brian Thomas, 24 1/2", "Eagle that captured the Sun".
\$200 - \$400



Lot # 428

- 428** Cedar "Wild Woman" mask signed Don Smith, with abalone eyes, 16".
\$500 - \$750

- 429** Small Asian rug.
\$25 - \$50

- 430** Chinese cedar lined carved chest.
\$100 - \$150

- 431** Small Asian rug.
\$40 - \$60



Lot # 432

- 432** Japanese print, 14 1/2" x 9 1/2", "Samurai".
\$75 - \$150



Lot # 433

- 433** Japanese print, 14 1/2" x 9 1/2", "Samurai".
\$75 - \$150



Lot # 434

- 434** Japanese woodblock, 14 1/2" x 9 1/2", "Samurai".
\$75 - \$150



Lot # 435

- 435** Japanese woodblock, 14 1/2" x 9 1/2", "Samurai".
\$75 - \$150



Lot # 436

- 436** Japanese woodblock, 14 1/2" x 9 1/2", "Samurai".
\$75 - \$150



Lot # 437

- 437** Chinese charger with hanger, 18 1/2" diameter.
\$75 - \$150



Lot # 438

- 438** Papua New Guinea totem carving, 6'.
\$600 - \$800



Lot # 439

- 439** Cedar bear mask, unsigned, 13".
\$250 - \$500



Lot # 440

- 440** Chinese painted vase with hardwood stand, 23 1/2".
\$250 - \$350

- 441** Small Chinese carved wooden chest.
\$40 - \$60

- 442** Decorative knife in sheath with feather.
\$50 - \$75



Lot # 443

- 443** Native carved shark with abalone eyes attributed to LaFortune, 29".
\$75 - \$125



Lot # 444

- 444** Japanese intricate painted charger decorated with cranes.
\$150 - \$250



Lot # 445

- 445** Pair of jade trees in jade jardiniere on wooden stands.
\$150 - \$250



Lot # 446

- 446** Papua New Guinea ceremonial head dress, 5'3".
\$800 - \$1,200

- 447** Japanese bronze jardiniere with elephant ring handles, 9 1/2" in height.
\$150 - \$250

- 448** Carved Chinese jardiniere stand.
\$50 - \$75

- 449** Asian rug, approximately 4'10" x 6'4".
\$200 - \$300



Lot # 450

- 450** Chinese carved hardwood figured table lamp, 17".
\$150 - \$300

- 451** Small Asian rug.
\$40 - \$60



Lot # 452

- 452** Framed painting and mask signed Richard Shorty '94, 15" x 22", "Wild Dancer".
\$75 - \$150



Lot # 453

- 453** Chinese watercolour on paper, 35 1/2" x 11", "Seated By The Stream".
\$150 - \$300



Lot # 454

- 454** Chinese watercolour on paper, 35 1/2" x 11", "Considering a Tree".
\$150 - \$300

- 455** Painted hide drum attributed to Lyle Campbell, 21".
\$300 - \$500

- 456** Salish lidded basket.
\$100 - \$150



Lot # 457

- 457** Woodblock print signed Kiyoshi Yoshida, 10" x 15", "Village Scene".
\$100 - \$200

- 458** 4 piece Asian chair and settee set including coffee table.
\$500 - \$750

- 459** Brown wool rug.
\$50 - \$100



Lot # 460

- 460** Rare embroidered 5 panel embroidered screen, 66" x 22" each panel.
\$400 - \$600



Lot # 461

- 461** Chinese carved hardwood Scholar, 30 1/4".
\$200 - \$400



Lot # 462

- 462** Chinese carved hardwood scholar, 31 1/4".
\$150 - \$250



Lot # 463

- 463** Chinese carved hardwood Scholar, 31".
\$200 - \$400



Lot # 464

- 464** Chinese brown glazed pot, 19 1/2".
\$150 - \$300

- 465** Chinese vintage lantern.
\$25 - \$50

- 466** Large shadow-box of a Vintage Hawaiian grass skirt.
N/A

- 467** Cast bronze Asian lamp without shade.
\$25 - \$50

- 468** Thistle Down Moon Mask, 16" x 16".
\$40 - \$60

469 Chinese wooden bird cage. \$20 - \$40

470 Wooden dragon puppet. \$20 - \$40

471 Lithograph signed Ningeokuluk Teevee, 30" x 32", "4 Seasons". \$40 - \$60

472 Print signed George Hunt Jr., 21 1/2" x 18 1/2", "Bookwus Arising" \$40 - \$60

473 Kilim rug, approximately 5'4" x 8'. \$150 - \$300



Lot # 474

474 Carved wooden ritual bowl and ladle, 33" x 12". \$700 - \$900

475 Framed print native style frame. \$15 - \$25



Lot # 476

476 Ceramic storage pot, 10 1/2" x 10". \$200 - \$300



Lot # 477

477 Ceramic Sago serving bowl, 7 1/2" x 13 1/2". \$150 - \$200

478 Colour woodcut signed Naoko Matsubara, 14 1/2" x 29 1/2", "Kitayama 1979". \$100 - \$150



Lot # 479

479 Asian blue and white charger. \$75 - \$150

480 Chinese Sang de Boeuf baluster vase repaired, 16". \$50 - \$75



Lot # 481

481 Haida feast spoon, approximately 10". \$200 - \$400



Lot # 482

482 Antique native MOP and glass bead necklace, pendant 1 3/4" across. \$25 - \$50

483 Inuit stone carving signed George Arlook, 10 1/4". \$150 - \$300

484 Inuit stone carving. \$75 - \$125

485 Inuit carving "Abstract Figure" signed George Arlook, 7 1/4". \$150 - \$300

486 MahJong set. \$50 - \$150

487 North west coast pestle. \$15 - \$30



Lot # 488

488 Inuit hardstone carving signed in syllabus, 11" x 6 1/2", "Walrus". \$150 - \$250

489 Three African necklaces. \$40 - \$60

490 Chinese silver filigree bracelet. \$25 - \$50



Lot # 491

491 Miniature carved mask on cord signed FAH '94, 2". \$50 - \$75



Lot # 492

- 492** Carved shark pendant on beaded necklace signed S. Karpes, 4".

\$75 - \$125

- 493** Chinese silver and cinnabar bracelet, 24".

\$25 - \$50



Lot # 494

- 494** Ivory inro necklace with amber and cinnabar beads, pendant 2 3/4".

\$50 - \$75



Lot # 495

- 495** Carved miniature mask on cord signed Kevin Cranmer, 2 1/4".

\$50 - \$100



Lot # 496

- 496** Jade bangle, 3 1/2".

\$50 - \$75

- 497** Carved soapstone kayaker.

\$50 - \$75

- 498** 3 Ethnic horn bangles.

\$25 - \$50



Lot # 499

- 499** Inuit carved stone figure signed Johnny GaGaulik, 6 1/2", "Man pee- ing in pot".

\$75 - \$125

- 500** Chinese carved bamboo bush pot.

\$50 - \$100



Lot # 501

- 501** Cedar Heron bowl signed Don Smith, 13".

\$150 - \$250

- 502** Soapstone figure signed DL, 6 1/2".

\$25 - \$50

- 503** Whale inner ear bone.

\$25 - \$75

- 504** Chinese silver bracelet.

\$25 - \$50

- 505** Chinese bronze figure of a Man and Frog on stand.

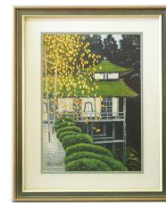
\$50 - \$100



Lot # 506

- 506** Papua New Guinea carved mask signed Francis Miamba, 27".

\$500 - \$600



Lot # 507

- 507** Woodblock print signed Shiro Kasamatsu, 14' x 9 1/2", "Autumn Home".

\$150 - \$250

- 508** Framed Chinese embroidered silk.

\$20 - \$40



Lot # 509

- 509** Vintage metal totem lamp base.

\$40 - \$60

- 510** Small B&W garden seat with dragons.

\$75 - \$125

- 511** Imari ginger jar.

\$25 - \$50

- 512** Pair of Chinese carved bookends, C1900.
\$50 - \$75



Lot # 513

- 513** Chinese figure with basket of flowers and rabbit, with carved base, 7 1/4".
\$150 - \$250



Lot # 514

- 514** Cedar totem pole signed Cicero August, 8".
\$75 - \$125



Lot # 515

- 515** Cedar bear, unsigned, 3".
\$50 - \$75
- 516** Jade snuff bottle.
\$50 - \$75
- 517** Carved stone incense burner.
\$50 - \$75
- 518** Chinese Sterling and moonstone necklace.
\$25 - \$50
- 519** 2 enameled snuff bottles.
\$40 - \$60



Lot # 520

- 520** Black jade pendant with 14K gold, 1 1/2".
\$40 - \$60



Lot # 521

- 521** Antique blue and white Asian bowl, 6" diameter.
\$75 - \$125



Lot # 522

- 522** Argillite orca pin signed Henry White, Masset, 2".
\$25 - \$50

- 523** Antique Chinese carved jewelry; 2 bracelets and a necklace.
\$20 - \$40



Lot # 524

- 524** Two 19th century Native baskets, 8".
\$200 - \$300
- 525** Chinese eggshell porcelain tea bowl in fitted box.
\$25 - \$50
- 526** Inuit print signed Sammy, "Harmony".
\$20 - \$40
- 527** Two Asian vases converted to table lamps.
\$75 - \$125
- 528** Celadan green glazed vase.
\$100 - \$150
- 529** Chinese painting on paper with gilt.
\$50 - \$75



Lot # 530

- 530** Large cloisonne vase.
\$100 - \$150
- 531** Pair of Oriental 19th century hand painted porcelain vases.
\$50 - \$100



Lot # 532

- 532** Unsigned cedar totem, 13".

\$40 - \$60



Lot # 533

- 533** Carved Asian antler, 12".

\$50 - \$100

- 534** Chine clay tea set in case.

\$40 - \$60

- 535** Lot of Asian carved stone and other miniature dishes.

\$30 - \$50

- 536** Inuit stone, "Two Birds".

\$25 - \$50

- 537** Satsuma part tea set.

\$25 - \$50

- 538** Chinese eggshell porcelain lantern in fitted case.

\$30 - \$50

- 539** Antique cloisonne vase with bird and flower decoration.

\$20 - \$40

- 540** Pair of flatweave rugs.

\$25 - \$50



Lot # 541

- 541** Print signed Jim Gilbert 1991, 17" x 23", "Whales".

\$50 - \$100



Lot # 542

- 542** Watercolour signed B. Smythe, 19" x 13 1/2", "Whale".

\$50 - \$100

- 543** South Asian painting on cloth.

\$20 - \$40

- 544** Painting of an "Asian Coastal Scene".

\$15 - \$30

- 545** Silver Plated "Native Essence" serving spoon & pr. Jeffies servers.

\$25 - \$50

- 546** Lot of African woven baskets.

\$20 - \$30

- 547** Bear carving signed Gary Baker, 15".

\$20 - \$40

- 548** Asian rug, approx. 4' x 6'.

\$50 - \$75



Lot # 549

- 549** Asian oil painting, 7" x 10 3/4", "Winter Village".

\$50 - \$75



Lot # 550

- 550** Print signed N. Tate, 8" x 11", "Raven & Moon".

\$50 - \$100

- 551** Limited print 130/150 sig. Jim Gilbert, "Return to The Quatam".

\$50 - \$75

- 552** Ltd print signed Holman, "children Playing Cariboo".

\$20 - \$40

- 553** Large Asian carpet, approximately 10' x 14'6".

\$150 - \$300

- 554** Print signed Tim Paul, 23" x 17 1/2" - "Shark & Man".

\$100 - \$150

- 555** Asian vase converted to a lamp and a pair of ginger jar lamps (3).

\$60 - \$90

- 556** Katchina doll on base with fur cape, 21".

\$50 - \$75



Lot # 557

- 557** Birch bark basket with lid, C.1960.

\$40 - \$60

- 558** Chinese wooden bird cage.

\$15 - \$30

- 559** Large brass charger.

\$15 - \$30

- 560** Boomerang.

\$15 - \$25

- 561** Chinese carved miniature chest.

\$20 - \$40



Lot # 562

- 562** Cedar salmon signed Rodney Thomas, 18".

\$50 - \$75

- 563** 4 Chinese "Warrior" decorated vases.

\$20 - \$30

- 564** Vintage Chinese tin umbrella stand.

\$10 - \$20

- 565** Old Chinese wooden sign.

\$15 - \$30



Lot # 566

- 566** Chinese elephant bronze vase, 18".

\$300 - \$400

- 567** Framed Chinese embroidery.

\$15 - \$30

- 568** Signed Asian jardiniere with certificate.

\$25 - \$50

- 569** Chinese carved medium sized chest.

\$20 - \$40



Lot # 570

- 570** 19th century Japanese charger, 18 1/4".

\$75 - \$150

- 571** Chinese blue and white teapot.

\$150 - \$200



Lot # 572

- 572** 19th century Japanese charger, 18 1/4".

\$75 - \$150

- 573** Chinese bronze fish handled vase.

\$125 - \$150



Lot # 574

- 574** Native beaded suede vest.

\$50 - \$100

- 575** Ceramic Buddha.

\$20 - \$30

- 576** Bronze Buddha head.

\$20 - \$40

- 577** Carved wooden grease bowl.

\$75 - \$125



Lot # 578

- 578** Pair of Asian plates.

\$100 - \$150

- 579** Chinese bronze censer.

\$40 - \$60



Lot # 580

- 580** Chinese circular box with MOP inlay, 10".

\$100 - \$150

- 581** Burmese 19th century carved gong stand.

\$25 - \$50



Lot # 582

- 582** Cinnabar box, 9 1/2".

\$20 - \$40

- 583** Asian style tapestry.

\$40 - \$60



Lot # 584

- 584** Papua New Guinea Mwai mask, 25".

\$225 - \$275

- 585** Small Asian rug, 3'6" x 5'6".

\$40 - \$60

586 2 jade bangles.

\$40 - \$60



Lot # 587

587 Meiji enamel pin with silver back, 1 3/4".

\$30 - \$50



Lot # 588

588 Stone carving of a toad with young on back.

\$75 - \$125



Lot # 589

589 Small Japanese Tsuba.

\$50 - \$75

590 Painted glass snuff bottle.

\$20 - \$40



Lot # 591

591 Small hardstone courtesan, 4 3/4".

\$40 - \$60

592 Agate and turquoise snuff bottle.

\$50 - \$75

593 Asian blue and white teapot.

\$20 - \$40

594 Chinese bronze handled vase.

\$30 - \$50

595 Kangxi marked bowls on period stand.

\$40 - \$60

596 Beeswax bracelet.

\$50 - \$100

597 Asian ceramic umbrella holder.

\$20 - \$40

598 Hooked carpet.

\$100 - \$150



Lot # 599

599 Gilt buddha, 14".

\$150 - \$250

600 Chinese tiered stand.

\$50 - \$75

601 Gold dragon porcelain plate.

\$50 - \$75

602 Pair of Kilim runners, approx. 3' x 14'.

\$100 - \$200

603 Manequin with Chinese silk dress.

\$25 - \$50



Lot # 604

604 Japanese charger with storks, 12".

\$125 - \$175

605 Chinese porcelain topped box.

\$75 - \$100

606 Painted cedar plaque signed Harvey Williams.

\$20 - \$40

607 2 carved bamboo brush pots.

\$15 - \$25

608 Southeast Asian bronze fish bowl.

\$15 - \$30



Lot # 609

609 Pair of Chinese yellow ground Satsuma vases converted to table lamps.

\$100 - \$150

610 Glass display case with 5 dolls.

\$25 - \$50

611 Glass display case with assorted Asian jewelry.

\$40 - \$60



Lot # 612

- 612** Pair of Japanese Imari serving dishes. \$150 - \$250



Lot # 613

- 613** Japanese rectangular plate, 11 1/2". \$100 - \$150

- 614** Large Chinese styled coffee table. \$25 - \$50

- 615** Set of three watercolours signed Tana Uchi. \$50 - \$100



Lot # 616

- 616** Chinese Famille Rose jardiniere, 15 1/2" in diameter. \$75 - \$125



Lot # 617

- 617** Japanese woodblock of a Samurai, 13 3/4" x 9 3/4". \$50 - \$75

- 618** Lot of Asian brass betel leaf bowls, a box and a shaker. \$20 - \$40

- 619** Lacquered offering bowl. \$25 - \$50

- 620** Watercolour on paper album in the manner of Koren Li. \$100 - \$150



Lot # 621

- 621** Pastel signed R. Larsen, 17 1/2" x 15", "Inuit Boy". \$50 - \$75

- 622** Chinese polychromed vase decorated with dragons. \$150 - \$250

- 623** Cinnabar vase. \$30 - \$50



Lot # 624

- 624** Chinese bronze footed incense burner, 11 1/2". \$275 - \$325

- 625** Copper dog figure. \$75 - \$125

- 626** Chinese silver overlaid pierced brush case. \$75 - \$100

- 627** Imari lidded vase. \$100 - \$150

- 628** Chinese carved display table with intricate dragon design, 48 1/2". \$200 - \$300

- 629** Paddle signed Gino Seward, 24". \$20 - \$40

- 630** Two Paisley cloths. \$20 - \$40

- 631** Three Native designed blankets. \$25 - \$50

- 632** Prayer rug cushion. \$40 - \$60



Lot # 633

- 633** Native beaded moccasins and grass embroidered bag. \$100 - \$150

- 634** Drawing on paper signed A. Dzuba 86, "Raven". \$20 - \$40

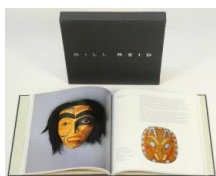
- 635** Cedar plaque signed SR, 22", "Salmon". \$20 - \$40

- 636** Blanc de Chine Kwan Yin in fitted case. \$25 - \$50

- 637** Painted Chinese chest. \$25 - \$50

- 638** Asian brass vase. \$20 - \$40

- 639** Carved hardwood Foo Dogs. \$40 - \$60



Lot # 640

- 640** Limited edition #123 copy of "Bill Reid" signed Doris Shadbolt. \$50 - \$100
- 641** Cedar plaque signed David Robertson, 22". \$20 - \$40
- 642** Paisley shawl. \$20 - \$40
- 643** Large Thai carved wooden panel. \$50 - \$100
- 644** Carved and painted Shark plaque signed G.Wood. \$25 - \$50
- 645** Carved Thunderbird signed possibly Tom LaFortune. \$25 - \$50
- 646** Chinese painted jar. \$30 - \$50
- 647** Carved Weeping Buddha, 7". \$20 - \$40
- 648** Two red lacquered trays. \$25 - \$50
- 649** Oriental four panel screen with a cart and flowers. \$15 - \$30
- 650** Inuit doll with carved stone head. \$20 - \$40
- 651** Reproduction Thai style bronze Buddha head. \$75 - \$125
- 652** Chinese painted pottery teapot. \$15 - \$30
- 653** Circa 19th century green celadon covered pot, "Blessing from Heaven". \$100 - \$150
- 654** Late 18th century Chinese glazed tea bowl, "Oil Droplets". \$75 - \$125
- 655** Carved cinnabar snuff bottle with stones. \$30 - \$50
- 656** Pair of oriental Foo-Dog marble paper weights. \$50 - \$100
- 657** 19th century Chinese tea bowl. \$20 - \$40
- 658** Set of four silver overlaid paper weights, "Five Tigers of Bravery". \$50 - \$100
- 659** Netsuke of a man. \$25 - \$50
- 660** Tengu netsuke. \$40 - \$60

- 661** Chinese pumpkin shaped teapot with 6 character mark underneath. \$20 - \$40
- 662** Chinese vase decorated with a Snowy scene. \$20 - \$40
- 663** Carved stone Buddha. \$20 - \$40
- 664** 4 panel screen with crane decoration \$40 - \$60
- 665** Artist proof signed Saul Williams, "Baby Thunderbirds". \$25 - \$50



Lot # 666

- 666** 19th century Japanese charger, 18 1/4". \$100 - \$150
- 667** Carved Buddha on fitted base. \$15 - \$30
- 668** Chinese Famille Rose teapot, c1900. \$20 - \$40
- 669** 2 cloisonne vases. \$15 - \$30



Lot # 670

- 670** Old utilitarian embroidered native gloves. \$100 - \$150



Lot # 671

- 671** Limited print 70/100 signed Roy Thomas 92, 17" x 17 1/2", "Water Spirit". \$100 - \$150



Lot # 672

- 672** Limited print 111/115 sig. Roy Thomas 92, 17" x 12 1/2", "Water Clan".
\$100 - \$150



Lot # 673

- 673** Pair of Chinese bone geese in fitted case, 15 1/2".
\$300 - \$400
- 674** 4 woven Asian hats.
\$15 - \$30
- 675** Limited print, "Soar Like an Eagle".
\$40 - \$60



Lot # 676

- 676** Print 39/90 signed Robert Schartan, 28" x 18", "Totem Pole".
\$50 - \$100
- 677** Limited print 47/50 signed Roy H. Vickers, 7 3/4" x 25", "A Quiet Place II".
\$40 - \$60
- 678** Print signed A. Thompson, 20" x 16", "Mussel".
\$100 - \$150
- 679** 2 Najaho pottery pots.
\$15 - \$30
- 680** Chinese brass crane upon turtle.
\$25 - \$50
- 681** 3 Japanese dolls.
\$20 - \$40
- 682** Cicada in bee wax sample.
\$50 - \$75
- 683** Small Chinese vase with Lake Scene decoration.
\$15 - \$30
- 684** Oriental cased medallion.
\$75 - \$100
- 685** Three carved totems.
\$25 - \$50

- 686** 2 Chinese bronze sculptures; Scholar and a Diorama.
\$20 - \$40



Lot # 687

- 687** Coral and turquoise Tibetan necklace.
\$40 - \$60
- 688** Islamic enameled compote.
\$50 - \$75



Lot # 689

- 689** Pair of cinnabar covered bronze bookends, 5 1/2" high.
\$20 - \$40
- 690** Pair of Chinese carved oxen and riders with wire inlay, 8 1/2".
\$200 - \$300
- 691** Lot of carved horn spoons.
\$15 - \$30
- 692** Cedar hummingbird signed B.B., 7" x 5 1/2".
\$25 - \$50
- 693** Champleve bronze censer.
\$20 - \$40
- 694** New Zealand aboriginal carved bowl and carved bird totem (4).
\$15 - \$30
- 695** Chinese pipe and Indian brass plate.
\$15 - \$30
- 696** Three small totem poles and 3 paddles and plaques (55).
\$20 - \$40
- 697** Salish cedar basket.
\$20 - \$40



Lot # 698

- 698** Print signed Joe Peters, 1/2" x 17 3/4", "Wa-Kes".
\$100 - \$150
- 699** Carved and painted Otter plaque.
\$15 - \$30
- 700** Asian watercolour, "Mountain Village".
\$25 - \$50

- 701** Chinese carved scholar. \$40 - \$60
- 702** Chinese carved wooden sage. \$100 - \$150



Lot # 703

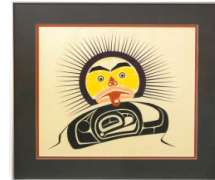
- 703** Chinese pottery vase with crane decoration, 10 1/4". \$75 - \$100
- 704** Collection of old utilitarian moccasins and bag. \$100 - \$150
- 705** Southwestern pottery bowl marked Kanuho, Navajo USA. \$15 - \$30
- 706** Faux argillite raven plate. \$10 - \$150
- 707** Chinese Goddess. \$10 - \$20
- 708** Carved cane. \$10 - \$15
- 709** Three brass vases with stands. \$15 - \$25
- 710** Spirit mask medallion signed SOH, 24". \$30 - \$60
- 711** Native copper sun plate attr. to Harold Alfred. \$30 - \$50
- 712** Chinese carved pritchard stick with peacock. \$15 - \$25
- 713** Lot of Chinese shoes and embroidered collar. \$15 - \$25
- 714** Two carved African masks. \$15 - \$30
- 715** Paisley style cover. \$25 - \$50
- 716** Two "Asian" style runners. \$50 - \$100
- 717** Two Chinese watercolours - one fan style. \$25 - \$50



Lot # 718

- 718** Japanese woodblock print after Iccho Hanabusa, 11 3/4" x 7 1/2", "White Cat". \$50 - \$100
- 719** Japanese woodblock print of a Geisha. \$25 - \$50

- 720** Chinese painting on silk, "Bird on Branch". \$20 - \$40
- 721** Limited Edition silk screen print 57/200, Signed Logan '93, "Moose". \$15 - \$30



Lot # 722

- 722** Print signed A.Thompson, 16 3/4" x 15", "Sea Urchin". \$100 - \$150



Lot # 723

- 723** Ltd. print signed Floyd Joseph, 12 1/2" x 13", "The Man Made Forest" \$75 - \$125
- 724** Chinese fan in case. \$15 - \$30
- 725** Inuit felt packing doll. \$75 - \$125
- 726** Inuit felt packing doll. \$75 - \$125
- 727** Inuit felt packing doll. \$75 - \$125
- 728** 2 carved native paddle plaques. \$20 - \$40
- 729** Print signed Francis Dick 91, 14" x 18", "Maya". \$30 - \$50



Lot # 730

- 730** Japanese woodblock print, 14" x 9", "Woman serving fish and a cat". \$50 - \$100
- 731** Framed print - "Coastal Scene". \$15 - \$30
- 732** Print on silk by Hisachi Otsuka, 36" x 23", "Geisha #4". \$75 - \$125
- 733** Chinese four panel folding screen. \$25 - \$50

- 734** Republic Period Chinese amber teapot \$25 - \$50



Lot # 735

- 735** Japanese cloisonne on porcelain vase with butterflies. \$30 - \$50

- 736** Bronze Kwan yin on carved wooden base. \$50 - \$75



Lot # 737

- 737** Pair of hardstone bookends, 7 1/2". \$50 - \$75

- 738** Cinnabar style dragon vase. \$50 - \$75

- 739** Cloisonne plate on stand with a pair of matching vases. \$40 - \$60

- 740** Chinese tea bowl and saucer. \$20 - \$40

- 741** Meiji Era Sino-Japanese purple clay teapot, "Medicine Pot". \$75 - \$125

- 742** Ming dynasty Ivory figure. \$75 - \$125

- 743** Chinese intricately carved Diorama on stand. \$300 - \$400

- 744** Chinese cast dragon formed pot. \$100 - \$150

- 745** Chinese fan in case. \$15 - \$30

- 746** Chinese clay figure of a musician. \$15 - \$30

- 747** Pair of framed Chinese embroideries mounted. \$50 - \$75

- 748** Table & 3 MahJong sets. \$40 - \$60



Lot # 749

- 749** Coloured lithograph signed Beau Dick 93, \$125 - \$175

- 750** Two signed prints by Floyd Joseph. \$30 - \$50

- 751** Inuit felt and seal skin applique. \$125 - \$175

- 752** Ten oriental medallions. \$75 - \$125



Lot # 753

- 753** Jadeite pendant on beaded necklace. \$25 - \$50

- 754** Silver overlay bangle, "Dragons' Pearl". \$40 - \$60

- 755** Jadeite bangle & Jadeite figure of Buddha. \$40 - \$60

- 756** Cedar wolf plaque signed Elaine Bruce, 12". \$25 - \$50

- 757** Amber beaded necklace. \$20 - \$40

- 758** Mottled green Jade weighing scale model. \$50 - \$100

- 759** Six Oriental metal medallions. \$40 - \$60

- 760** Chinese purple clay tea set in case. \$40 - \$60

- 761** Yixing pottery barrel shaped jar. \$75 - \$100

- 762** Carved dragon boat in glass display case. \$100 - \$150

- 763** Small paddle signed RN with abalone. \$20 - \$40



Lot # 764

- 764** Carved jade bead necklace, 2 1/2" pendant. \$40 - \$60



Lot # 765

- 765** White jade bead necklace with silver filigree clasp, 21" long.
\$40 - \$60



Lot # 766

- 766** Famille Noir porcelain necklace, 24".
\$40 - \$60
- 767** Inuit stone, "Mans Head".
\$15 - \$25
- 768** Small carved cedar face signed possibly Ben.
\$15 - \$20
- 769** Navajo necklace and ring.
\$30 - \$50
- 770** Beeswax disc bracelet.
\$50 - \$100



Lot # 771

- 771** Carved and painted miniature bowl and ladle signed S. Karpes, 3".
\$50 - \$100



Lot # 772

- 772** Antique Chinese silver bracelet with carved figures, 6 1/2".
\$30 - \$50
- 773** Ten-Wan soap stone scholar stamp, russet yellow.
\$100 - \$150
- 774** Oriental carved stone fruit basket.
\$50 - \$75



Lot # 775

- 775** Lot of 6 copper and silver brooches attr. to Francis Dick.
\$50 - \$75



Lot # 776

- 776** Carved pendant with abalone signed S. Karpes '97, 2 3/4".
\$75 - \$125



Lot # 777

- 777** Carved frog pendant with copper and abalone signed Sean Whonnok, 3 3/4".
\$50 - \$75

- 778** Asian vase decorated with figures.
\$20 - \$30



Lot # 779

- 779** 2 ceramic vases signed Ruby Joseph 1992, 8 1/2" & 10 1/2".
\$50 - \$100



Lot # 780

- 780** Cedar eagle plaque signed Don Smith, 10 1/2".
\$30 - \$50
- 781** Camel saddle bag.
\$20 - \$40



Lot # 782

- 782** Asian watercolour signed Lifu, 18" x 7", "Duck flying over Lotus".
\$200 - \$400

- 783** Myan sculpture in shadowbox frame.
\$15 - \$30



Lot # 784

- 784** Carved miniature frog mask signed Joe Peters Jr., 2".
\$50 - \$75

- 785** Ethnic beaded necklace.
\$20 - \$40

- 786** Pair of silver overlay blessing bangles, "Twelve Zodiac".
\$40 - \$60

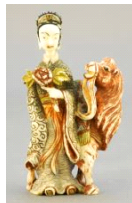


Lot # 787

- 787** 2 carved pendants on cords - one with Mother of Pearl eyes.
\$75 - \$125

- 788** Cedar bear plaque signed Albert Bruce, 4 1/2".
\$25 - \$50

- 789** Oriental Fu-ron stone scholar seal "Lion Guard".
\$50 - \$100



Lot # 790

- 790** Ching Dynasty carved snuff bottle, 3".
\$50 - \$100



Lot # 791

- 791** Sterling on copper Thunderbird bracelet signed NS (Norman Seaweed).
\$25 - \$50

- 792** Yixing purple clay teapot "Pumpkin", attributed to Gu Jingchou (1915-1996).
\$75 - \$125

- 793** 19th century opium pipe.
\$25 - \$50

- 794** Oriental display medallion albums & pepper notes.
\$50 - \$100

- 795** 3 tusks
\$75 - \$125

- 796** Chipaway cutlery knife in sheath.
\$75 - \$100



Lot # 797

- 797** Sterling Thunderbird pendant signed NS (Norman Seaweed).
\$50 - \$75



Lot # 798

- 798** Sterling on copper Thunderbird pendant signed NS (Morman Seaweed).
\$40 - \$60

- 799** Chinese enamel dish and match case.
\$20 - \$40

- 800** Chinese ceremonial stone artifact, "Dragon".
\$50 - \$100



Lot # 801

- 801** Southwest glass beaded egg.
\$15 - \$30

- 802** Chinese enameled silver conjoined miniature snuff bottles, 1 3/4" in height.
\$50 - \$100



Lot # 803

- 803** Sterling on copper Eagle Bracelet signed NS
(Norman Seaweed).
\$25 - \$50

- 804** Antique ivory beaded necklace.
\$150 - \$200

- 805** Silver bracelet signed R.S.'87.
\$25 - \$50

- 806** Burmese spinach green Jadeite bangle.
\$40 - \$60

- 807** White celadon Jade plaque, "Monkey on
Elephant".
\$75 - \$125

- 808** Cherokee stoneworks knife in sheath.
\$75 - \$100



Lot # 809

- 809** Two beaded Whimseys.
\$75 - \$125

- 810** Cedar carved moon medallion signed Floyd
Edwards, 7 1/2".
\$25 - \$50



Lot # 811

- 811** Sterling Eagle and Bear pendant signed PAS
(Paddy Seaweed).
\$25 - \$50

- 812** Painted plaque of cranes on a carved stand.
\$20 - \$30

- 813** Carved stone Kwan Yin.
\$50 - \$75



Lot # 814

- 814** Jambiya with golden inlay and silver sheath, blade
7".
\$75 - \$125